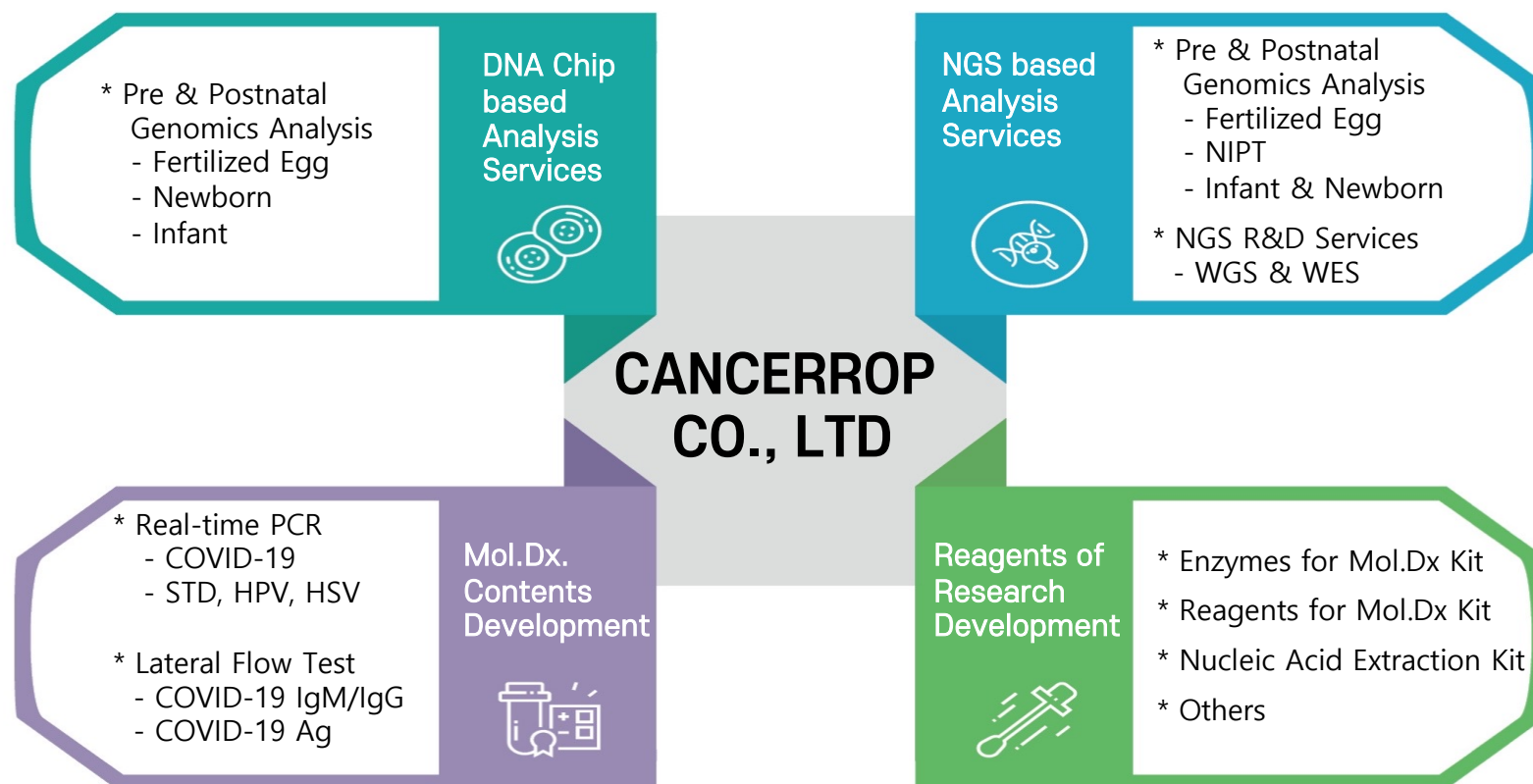


GenomeCheck Sales Points & Processes





Global Leading Company of Genomics Analysis and Mol.Dx. Areas





Genomic Testing Service from Prenatal to Postnatal Stage

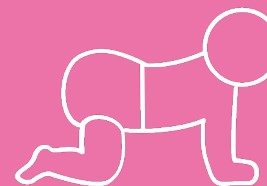
01



GenomeCheck **M / M** Plus

Non-Invasive Prenatal Test

02



GenomeCheck **G**

For Infants / Newborn & Children

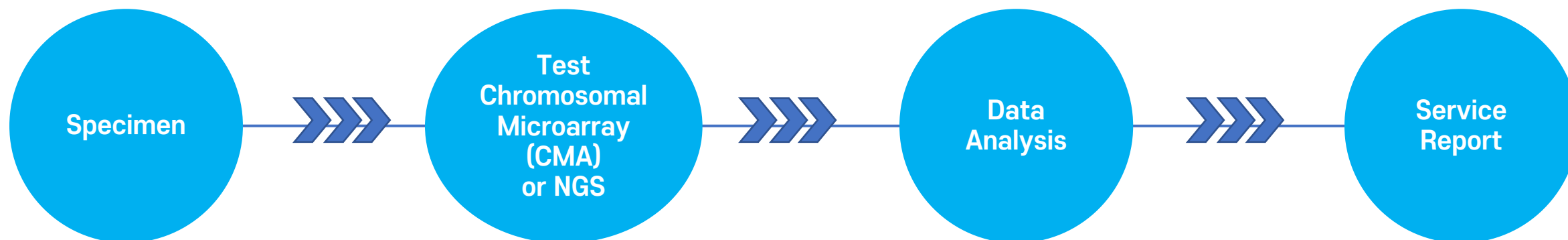
GenomeCheck G

| | GenomeCheck G |
|------------------------------|-----------------------------------------------------------------------------------------------------------------------------------------------------------|
| Test Method | CMA, Optional: FISH & Karyotyping |
| Platform | Microarray based- array CGH Chip |
| Target Areas | Whole chromosome Aneuploidy & Structural abnormalities |
| Number of Target Diseases | 400 |
| Application | Max. 1,000 kinds more |
| Journal Publication | 40 cases more on SCI grade journals |
| Available Confirm Test | FISH Available |
| Features | <ul style="list-style-type: none"> • More than 300,000 cases of data analysis in 14 yrs • More than 40 papers have been published |

GenomeCheck M

| | GenomeCheck M | GenomeCheck M Plus |
|----------------------------------------------------|------------------------------------------------------------------------------------------------------------------------------------------------------------|------------------------------------------------------------------------|
| Available to Test | After 10 weeks of pregnancy | |
| Target Autosomes | In total, 6 (Autosome 13,18,21,9,16 and 22) | |
| Target Sex Chromosomes | In total, 4 (Sexual XO,XXY,XXX,YYY) | |
| Microdeletion/ duplication | None | 113 kinds of Microdeletion/Duplication chromosomal abnormalities |
| In Total Target Chromosomal Abnormalities | 10 | 123 (Largest cover of test in Korea) |
| Features | <ul style="list-style-type: none"> • High precision bioinformatic algorithm • Low test failure rate: 1.2% (in Illumina VeriSeq V2) | |

Procedures



Specimen for

- GenomeCheck G: Blood
- GenomeCheck M: Blood

Test with

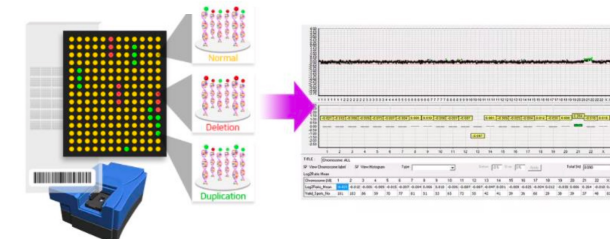
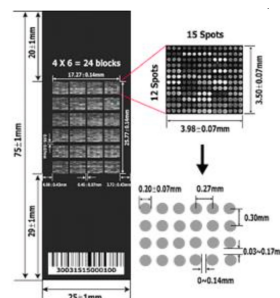
- GenomeCheck G: BAC Chip
- GenomeCheck M: NGS

Data Analysis based

- GenomeCheck G/M:
Copy Number Variation (CNV)

Turnaround Time of

- GenomeCheck G: **10 days**
- GenomeCheck M: **7 days**



Price benefits versus Competitors and Cost Effectiveness

| Service Name/Category | | Benefits | Price |
|--------------------------------------------------------------|---------|------------------------------------------------------------------------------------------------------------------------------------------------------------------------------------------|----------|
| GenomeCheck M: Non-Invasive Prenatal Test (NIPT) | Classic | - 10 different types of tests including Trisomy 13/18/21, XY Analysis, Microdeletion. | 170 Euro |
| | Plus | - 123 different types of tests including GenomeCheck G Classic. - Harmony-Plus: Trisomy 13/18/21, XY Analysis, Microdeletion - 450Euro. | 250 Euro |
| GenomeCheck G: Newborn Infant Or Children | Classic | - No similar genomic testing service in the worldwide (based aCGH Microarray). - Cheap price than NGS based test services. - More than 300,000 accumulated clinical data in Korea. | 100 Euro |
| Equipment & Bioinformatics Server (NGS System) | - | - NovaSeq 6000 - 1 ea - NextSeq 500 & 550 - 1 ea - MiSeq Dx - 1 ea - Ion S5 Dx - 3 ea - NextSeq 550Dx - 1 ea - Illumina VeriSeq NIPT Solution V2 | - |

* Above price is for distributor

| | Harmony |
|--------------------------------------------------------|----------|
| Classic | |
| Trisomy(21/18/13) | 350 Euro |
| Expert (Trisomy 21/18/13 + XY analysis) | 390 Euro |
| Plus (Trisomy 21/18/13 + XY Analysis+Microdeletion) | 450 Euro |
| * Above price for patient | |
| | NIFTY |
| Basic | |
| Trisomy(21/18/13) | 350 Euro |
| Standard (Trisomy 21/18/13 + XY analysis) | 390 Euro |
| Plus (Trisomy 21/18/13 + XY Analysis+Microdeletion) | 590 Euro |
| * Above price for patient | |



From Visiting Customer to Feedback Test Report





Target: Clinical labs and OBGY Hospitals



Visiting Customer

- Clinical labs or Hospitals
- **Introducing GenomeCheck genomic testing service**
- **Emphasizing distinguished and strong points against competitors**
- **With leaflets of GenomeCheck G, M/M+**

Distinguished and Strong Points

- Price
- Fast result with TAT
- Test items versus competitors

| CANCERROP | Test Items | Harmony |
|-----------------|------------------------------------------------|----------|
| - | Trisomy(21/18/13) | 350 Euro |
| - | Trisomy 21/18/13 + XY Analysis | 390 Euro |
| 170 Euro | Trisomy 21/18/13 + XY Analysis + Microdeletion | 450 Euro |
| 250 Euro | Additional 123 Types Chromosomal Abnormalities | None |



Key Points: Writing Application Form

Application
GenomeCheck
G or M/M+

Check Points

- Writing a request forms for patients (application)
- Prepare specimen collection
- Considering specimen delivery in domestic

CANCERROP Provide

- All of application form
- Specimen collection tube (Streck cfDNA BCT CE)
- Specimen delivery box



[Upper view]



[Inside view]



[Streck cfDNA
BCT CE tube]

[Specimen delivery box]



Key Points: Room Temperature Delivery

Specimen
Delivery
in Domestic

International
Transporting
Specimen

Check Points

- All of specimen must be delivered at Room temperature (Domestic/International)
- International transport specimen must be arrived CANCERROP within 96 hrs
- Recommend DHL for international transportation

CANCERROP Provide

- Specimen collection tube (Streck cfDNA BCT CE)
- DHL styrofoam box
- DHL outter carton box



**BIOLOGICAL SUBSTANCE
CATEGORY B**



Key Points: Print & Feedback to the Customer

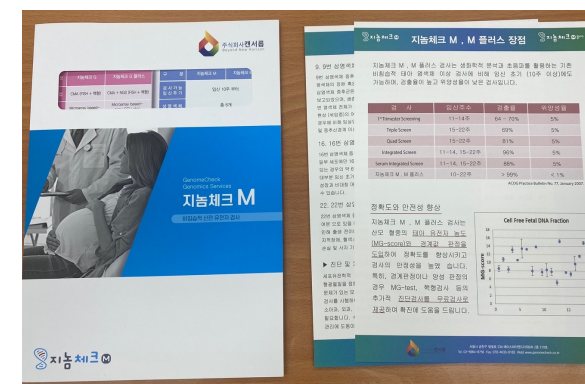
Feedback
Test Report
to Customer

Check Points

- Test report will be printed out at CANCERROP
- Test report will be packaged with holder
- Deliver to customer by DHL

CANCERROP Provide

- Test report
- Test report with holder
- Deliver with DHL





Address. 10F Elysia Bldg, 173 Digital-ro, Geumchun-gu, Seoul, Korea
Main. +82-2-890-8700 | Sales Dept. +82-2-890-8709 | FAX. +82-2-890-8702
Cell Dept. +82-2-890-8703~5 | Mol.Genetics Dept. +82-2-890-8709
E-mail. genomecheck@cancerrop.com | www.cancerrop.com